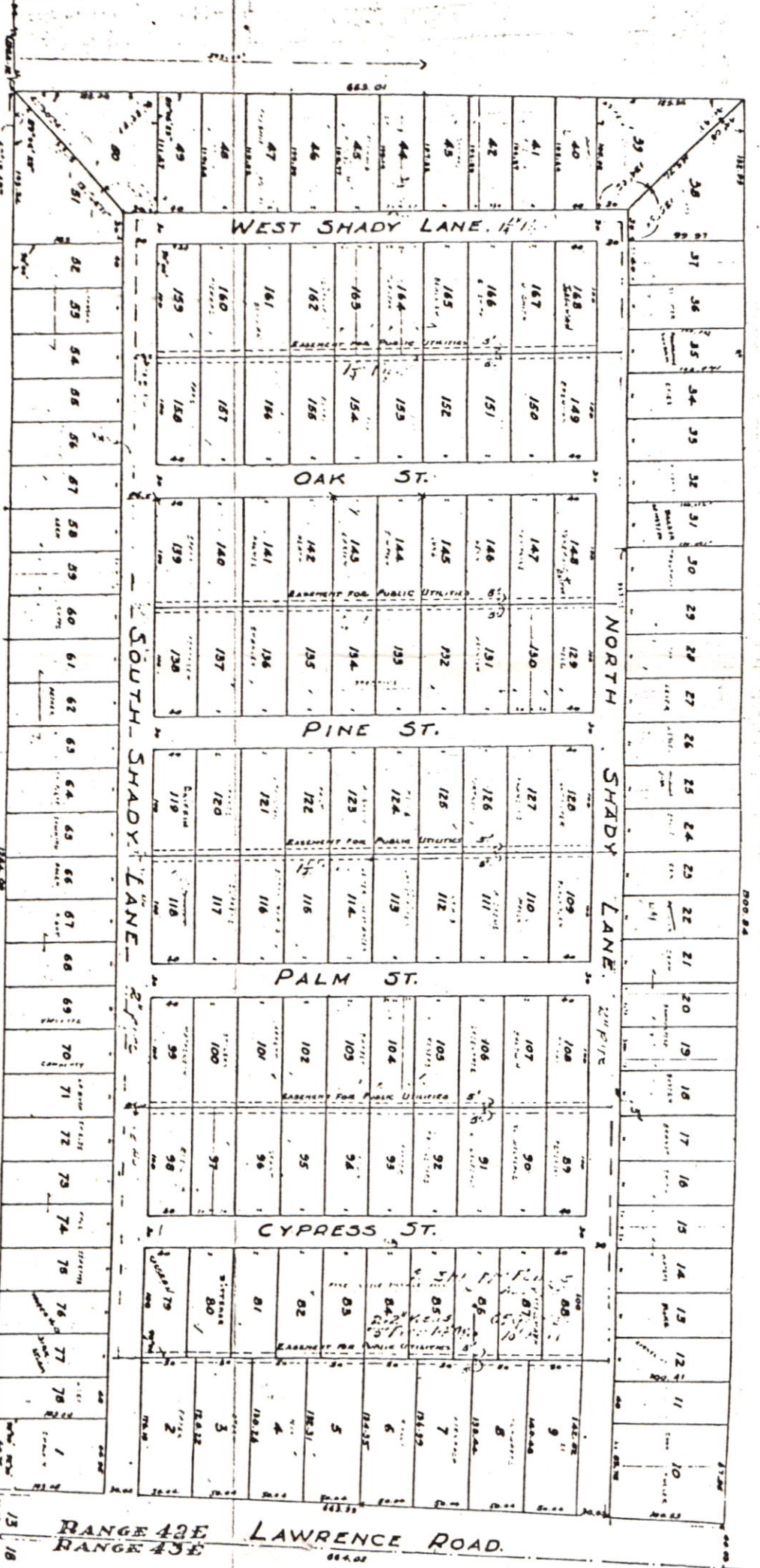


4197



**ENGINEER'S CERTIFICATE:**  
 I HEREBY CERTIFY that the S 1/4 of SEC 4 of SEC 35 E. Twp 45 S. Range 43 E. Palm Beach County, Florida was surveyed under my direction and completed on January 18, 1934 as indicated on the above plat and survey. I FURTHER CERTIFY that all measurements shown on this plat were made by me or under my direct supervision and that they are in accordance with the laws of Florida.

CHESTER F. WRIGHT  
 Registered Engineer & Land Surveyor  
 Palm Beach County - Florida



**PINE GROVE VILLAGE**

Formerly  
**RODNEY'S**

**SHADY TRAILER PARK**

S 1/4 SEC 4 SE 1/4 SEC 13 TWP 45 S. R 43 E.  
 PALM BEACH COUNTY - FLORIDA.

CHESTER F. WRIGHT  
 REGISTERED ENGINEER & LAND SURVEYOR  
 LAKE WORTH - FLORIDA.

January 1934.  
 Rev. MAR. 15, 1934.  
 Rev. MAR. 10, 1935.

13-45-42

Am 77

